



NEOM



نيوم NEOM

**Reinforcement Spacer - HDPE
Material Submittal**

WO-001-Module-43&44-The Line Main Piling Works Bored Piling

15-600000-4200000049-KTC-STR-MAT-000013-R02

12-Nov. 2022



Document history:

Revision code	Description of changes	Purpose of issue	Date
01	First Issue	For Approval	2022/10/27
02	As per Comments	For Approval	2022/11/12

Document approval:

	Prepared by	Reviewed by	Approved by
			
Name	Mohamad Hasan	Phil Horton	Mark Newton
Job Title	QA/QC Manager	Senior Project Manager	Construction Director

NEOM - The Line

The LINE Main Piling Works Reinforcement Spacers Material Submittal

Project Location	Province of Tabuk - Kingdom of Saudi Arabia
Contract No.	4200000049
Employer Reference	15-600000-4200000049-KTC-STR-MAT-000013-R02
Contractor Reference	KNE-MAT-013-R02

Date	Rev	Changes	Revised	Approved	Status
27-10-2022	01	Issue for approval	-	M.H.	IFA
12-11-2022	02	Issue for approval	-	M.H.	IFA

Total Number of pages Including Cover Sheets	6
--	---

TABLE OF CONTENTS

1-	INTRODUCTION	5
•	REINFORCEMENT SPACERS DATA SHEET	6

1- Introduction

This document presents the Material Approval Submittal for the Reinforcement Spacers.

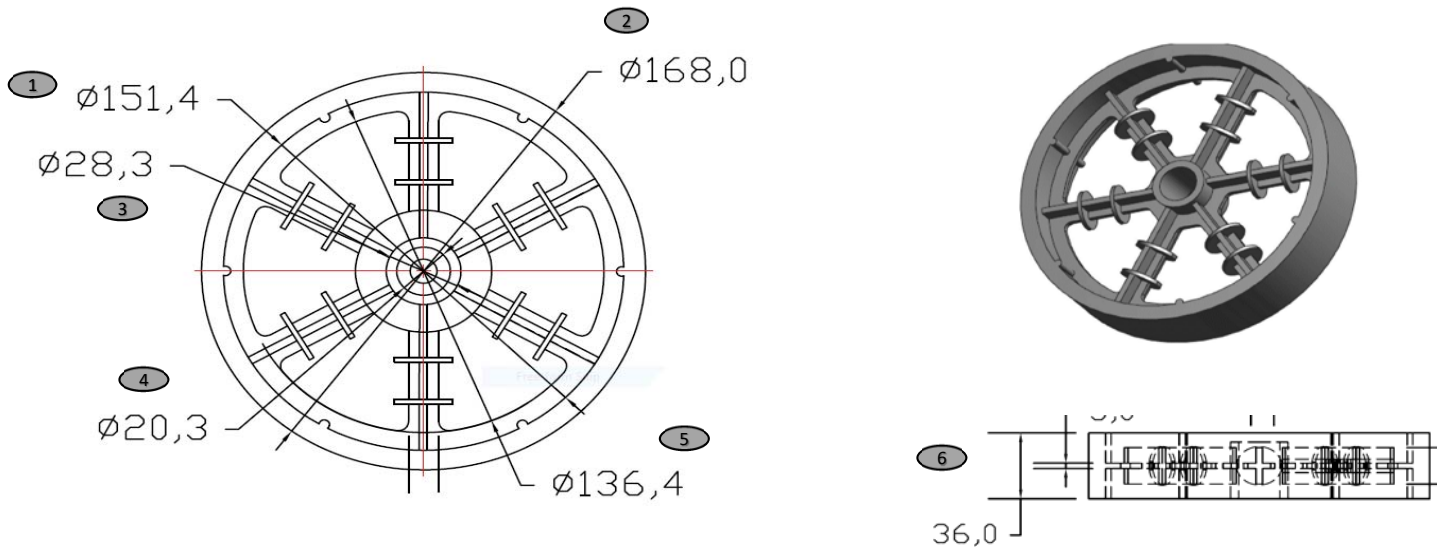
The Spacers are made of **durable HDPE**, and will be used to achieve the required concrete cover for the Bored Piles, as per the project specifications.

The Spacer will maintain a **clear cover of 75mm as per Project Specification and Requirements**.

- **Reinforcement Spacers Data Sheet**

TECHNICAL DATA SHEET

Certificate Number :	SPI _2022/IMQ19	Customer Name :	Keller Arabia Neom Site
Product Name :	WHEEL SPACER 75MM HEAVY DUTY	Manufacturing Date :	
Material :	PEHD + Additives	Quantity :	12000
Colour :	BLACK	Date of Issue :	17.10.2022

DESIGN:


Defects	Method	Result	Remarks
Short Short	Visual Check	OK	
Silver Streaks	Visual Check	OK	
Flash	Visual Check	OK	
Strength	Physically Check	OK	
Warpage	Visual Check	OK	
Shrinkage	Visual Check	OK	
Colour	Match With Sample	OK	

Specification				Result	Remarks
Si no	Parameter	Unit	Value		
1	Diameter Ø1	mm	151.4 ± 2	OK	
2	Diameter Ø2	mm	168 ± 2	OK	
3	Diameter Ø3	mm	28.3 ± 2	OK	
4	Diameter Ø4	mm	20.3 ± 2	OK	
5	Diameter Ø5	mm	20.3 ± 2	OK	
6	Thickness	mm	36 ± 2	OK	
7					
8					
9					
10					
11					
12					
13					
14					
15					
16					

This Certify that the above Packing Material was tested and verified according to Sabin Plastic Industries test Procedure.

Prepared By :Sikkandar

Date:17.10.2022

Approved By :Prashant kumar

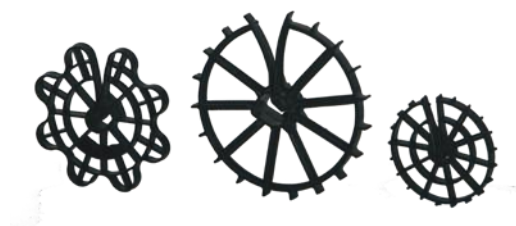
Date :17.10.2022



Wheel Spacers (Pile)

Wheel spacers (open) are for reinforcing bars (construction/piling). A full range of wheel spacers are designed for accurate positioning of vertical reinforcing bars.

Size	Colour	Bar Dia	Code
75mm	Black/ Grey	Closed std.	WSR75C- 3
75mm	Black/ Grey	Open std.	WSR750P- 19
75mm	Black/ Grey	Closed new	WSR75CN- 8
75mm	Black/ Grey	Open new	WSR750N- 9
100mm	Black/ Grey	Closed	WSR100C- 7
100mm	Black/ Grey	Open	WSR1000P- 14
75mm	Black/ Grey	Closed heavy duty	WSR75CB- 6
100mm	Black/ Grey	Closed heavy duty	WS100HDC- 257



Wheel Spacers

Wheel spacers (open) are for reinforcing bars (construction/piling). A full range of wheel spacers are designed for accurate positioning of vertical reinforcing bars.

Size	Colour	Bar Dia	Code
25mm	Black/ Grey	4 ot 8	WSR25- 90
30mm	Black/ Grey	4 to 8	WSR30- 203
30mm-T	Black/ Grey	4 to 12	WSR30T- 22
40mm	Black/ Grey	4 to 12	WSR40- 202
50mm	Black/ Grey	4 to 12	WSR50- 65
50mm-T	Black/ Grey	4 to 20	WSR50T- 43

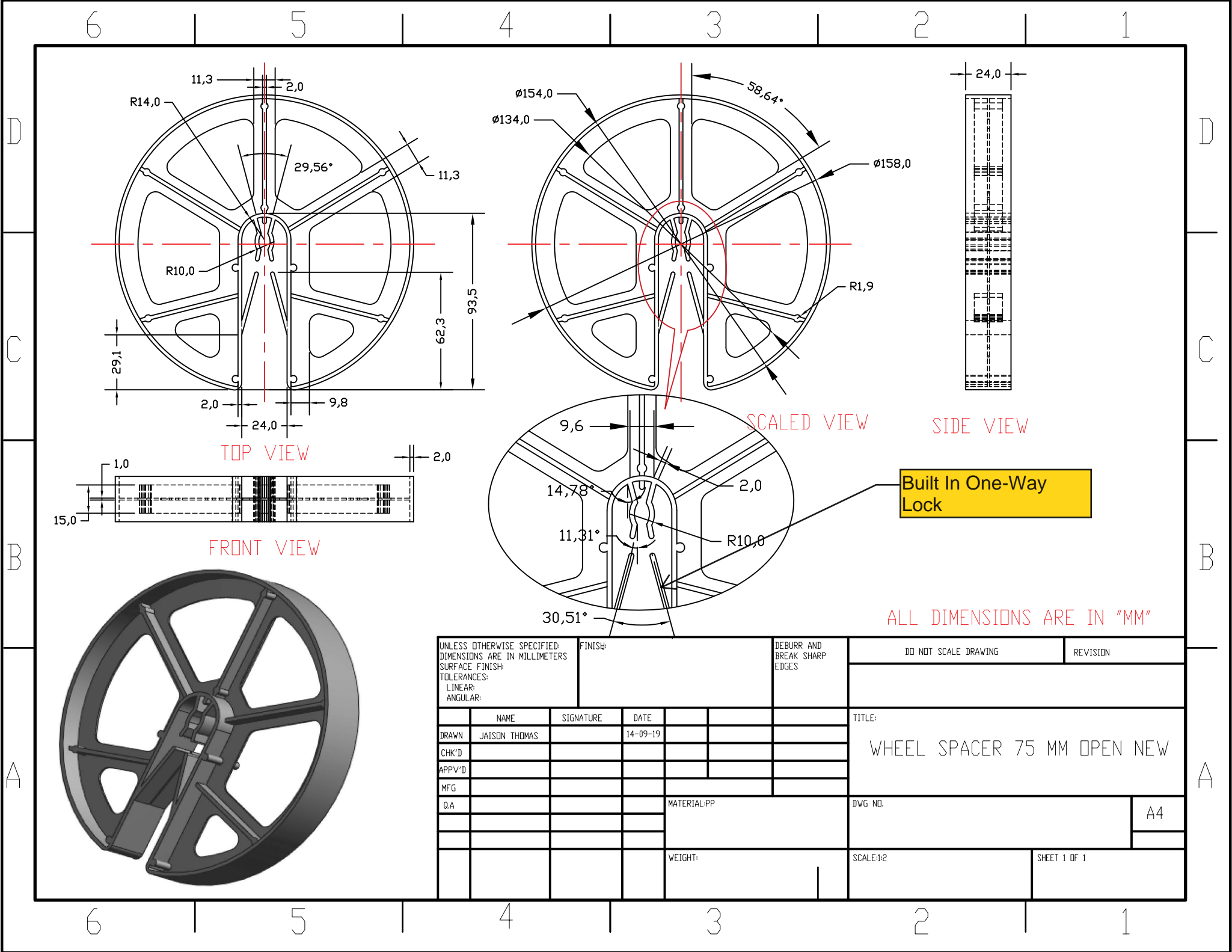
Chair Spacers

Chair spacers are specially designed for accurate positioning of horizontal reinforcing bars.



Size	Colour	Bar Dia	Code
25mm	Black /Grey	4 to 12	CHS25B- 200
30mm	Black /Grey	4 to 12	CHS30B- 66
40mm	Black /Grey	4 to 12	CHS40B- 64
50mm	Black /Grey	4 to 12	CHS50B- 207
60mm	Black /Grey	4 to 20	CHS60B- 201
75mm	Black /Grey	4 to 26	CHS75B- 204
75mm MD	Black /Grey	2 to 23	CHS75HD- 223
60mm	Black /Grey	4 to 20	CHS35- 23
(PRF)35mm	Black /Grey	4 to 20	CHS40- 23
(PRF)40mm	Black /Grey	4 to 20	CHSS40- 23

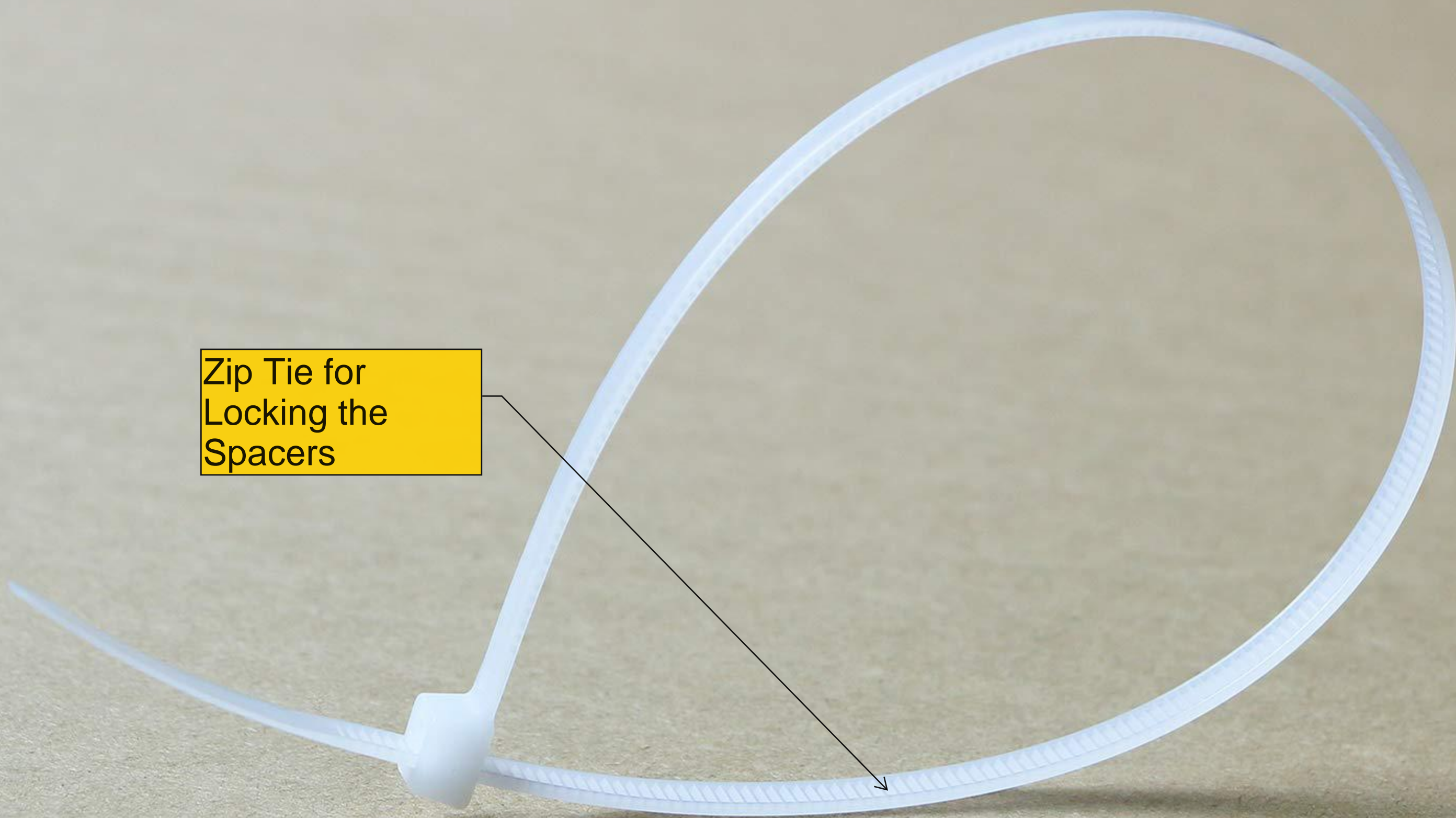
Chair spacer compressive strength report (Attached last page)



Built In One-Way
Lock

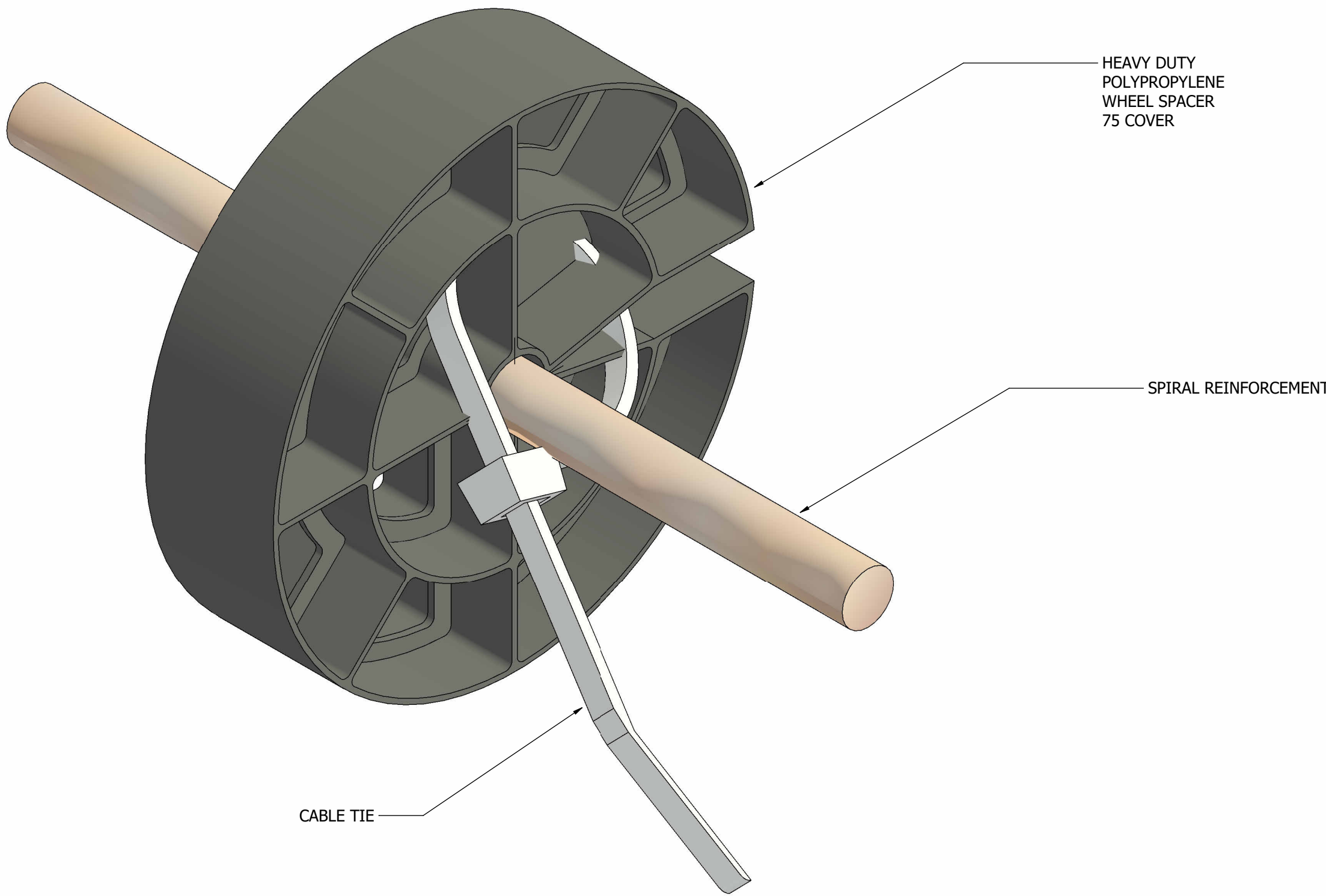


Zip Tie for
Locking the
Spacers



0 10 20 30 40 50 60 70 80 90 100mm ON A1 SIZE ORIGINAL

SHEET LIST	
Sheet Number	Sheet Name
1	ISOMETRICE VIEW



WHEEL SPACER - ISOMETRIC VIEW
SCALE

01	ISSUED FOR REVIEW	MH	11-NOV-2022

Rev	Description	By	Date
<small>COPYRIGHT THIS DRAWING IS COPYRIGHT AND THE PROPERTY OF KELLER AMEA. IT MUST NOT BE RETAINED, COPIED OR USED WITHOUT THE AUTHORITY OF KELLER AMEA. DISCLAIMER THIS DRAWING AND ITS CONTENTS ARE ELECTRONICALLY GENERATED, ARE CONFIDENTIAL AND MAY ONLY BE USED FOR THE PURPOSE FOR WHICH THEY WERE INTENDED. KELLER AUSTRALIA PTY LTD. WILL NOT ACCEPT RESPONSIBILITY FOR ANY CONSEQUENCES ARISING FROM THE USE OF THE DRAWING FOR OTHER THAN ITS INTENDED PURPOSE OR WHERE THE DRAWING HAS BEEN ALTERED, AMENDED OR CHANGED EITHER MANUALLY OR ELECTRONICALLY BY ANY THIRD PARTY.</small>			

KELLER AMEA
Building Number 6755
Al Amer Sultan Bin Abdulaziz
Al Olaya District
47911 Tabuk
Kingdom of Saudi Arabia
www.keller.com



Client

NEOM


نېوم NEOM

Project Title

THE LINE - MODULE 43

Drawing Title

PILE CAGE WHEEL SPACER

Sheet Title

ISOMETRICE VIEW

Status		
NOT FOR CONSTRUCTION		
Drawing Type	Drawing Number	Revision
SHD	023	01
Drawn	Approved	Sheet
AAB	MH	1 of 1
Original Issue Date	Scale	Size
-		A1