

SABIN[®]

SIGNS





GADOYA HOLDINGS

OUR PARENT COMPANY

OUR GROUP OF COMPANIES

UAE . OMAN . QATAR . KSA . INDIA

Gadoya Holdings began its journey in 1990 as a humble ten-person company led by the visionary Mr. Satish Gadoya. The business has grown from strength to strength under his stewardship, today the business is amongst the most successful and well respected in the region.

Gadoya Holdings today is a diversified conglomerate that has varied business interests in industries such as advertising, healthcare, engineering, electrical, plastics, technology, travel, real estate.

While the business has continued to prosper and grow, we continue with the same humble principles and will always put the customer first.

SABIN
SIGNS

SABIN
PLASTIC

SABIN
PLASTIC TRADING

SABIN
ENGINEERING

gama
trading

musafir.com

gama
engineering

Secure Trading
Co. (WLL)

G.E.M TRADING
AND SERVICES LLC

Sabin Signs is a standout success in the local business scene, recognized as one of the fastest-growing companies. With a tradition of excellence, we've become the go-to destination for all signage & branding solutions, as well as acrylic fabrication, custom-made acrylic pools, panels and more.

Rooted in the legacy of Sabin Plastic, established in 1997, Sabin Signs inherits expertise and a commitment to reliability and customer satisfaction. We are your one-stop shop for everything from acrylic fabrication to pop-up installations and signage solutions, delivering both standard designs and bespoke creations with unmatched skill.

Our collaborative approach ensures each project receives personalized attention, transforming client ideas into top-quality realities. We build lasting partnerships based on trust, transparency and excellence, with a dedication to superior craftsmanship and attention to detail.

Our esteemed clients include Emirates, LDC, Binghatti, Bateel, Coca Cola Arena, Pop City and many others. Sabin Signs is not just about signage solutions; we're in the business of creating possibilities, shaping environments, and enhancing experiences through innovative design and unwavering quality.



FABRICATION

SIGNAGES

DIGITAL PRINTING & BRANDING

DISPLAYS

OUR MACHINERY



HP Latex R2000 Plus

ZUND Cutting machine

CNC Router

Laser Cutting

Laser Welding

Acrylic Bending

Letter Bending





ACRYLIC POOL WALLS & WINDOWS

ACRYLIC WATER FEATURES

ACRYLIC FABRICATION

INDOOR / OUTDOOR SIGNAGES

JOINERY & RETAIL DISPLAYS

ACRYLIC / POLYCARBONATE ROOFINGS

LARGE FORMAT DIGITAL PRINTING

EVENTS / EXHIBITION



TYPES OF POOLS TO CHOOSE FROM:



Advantages of Acrylic Pools

Exceptional Durability:

Acrylic Panels are 20-25 times impact resistant than glass, yet significantly lighter, offering a perfect balance of strength and weight.

Enhanced Safety:

With a hardness rating of H4, acrylic pools are more resistant to impacts, providing a secure and reliable pool environment.

Shatterproof Design:

Unlike traditional glass pools, acrylic pools do not break or shatter, ensuring a worry-free and long-lasting aquatic experience.

Pressure Tolerance:

Acrylic pools absorb and tolerate overpressures, making them a resilient choice for various pool conditions and activities.

Underwater Polishing:

The unique properties of acrylic allow for polishing even underwater, maintaining a pristine and clear appearance for your pool.



SIGNAGES



Enhance your brand visibility and make a lasting impression with our premium signage solutions.

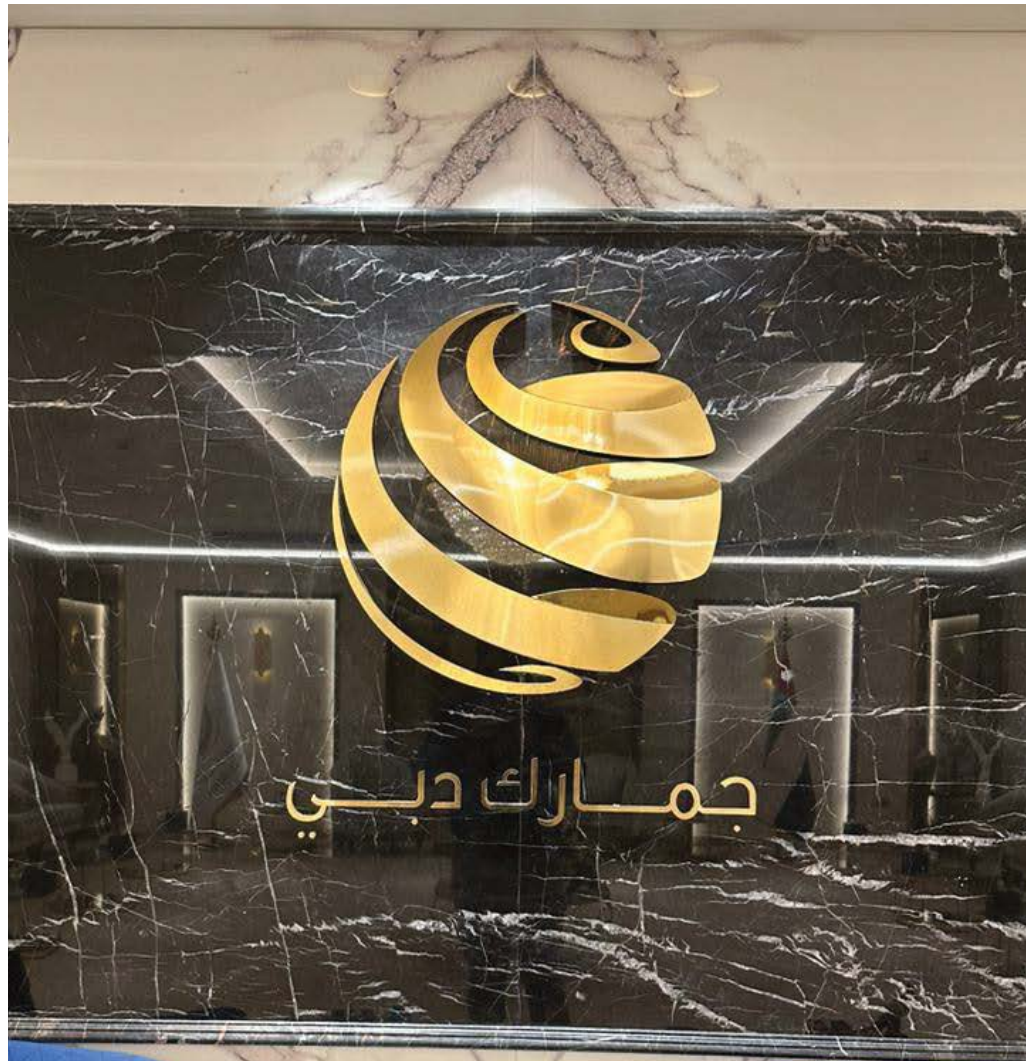
At Sabin Signs, we offer a wide range of customizable indoor and outdoor signages designed to meet your unique branding needs.

These include both lit and non-lit options for:

- ☐ 3D Signs: Add depth and dimension to your branding with our expertly crafted 3D signs.
- ☐ Acrylic Wall Signs: Achieve a sleek and modern look with our high-quality acrylic wall signs.
- ☐ Wayfinding Signs: Ensure seamless navigation with our clear and concise wayfinding signs.
- ☐ Pylon Signs: Make a bold statement with our durable and eye-catching pylon signs.
- ☐ Light Box Signs: Illuminate your message with our vibrant light box signs.
- ☐ Safety Signs: Promote a safe environment with our comprehensive range of safety signs.

Our state-of-the-art printing technology ensures that all our signages are thermoformable, non-toxic, eco-friendly, and sustainable. With a keen eye for detail and a commitment to excellence, our expert team will guide you through the entire process, from design to installation, providing the best solutions tailored to your specific requirements. Let Sabin Signs help you create impactful visuals that leave a lasting impression.





FRONTLIT 3D SIGNAGE



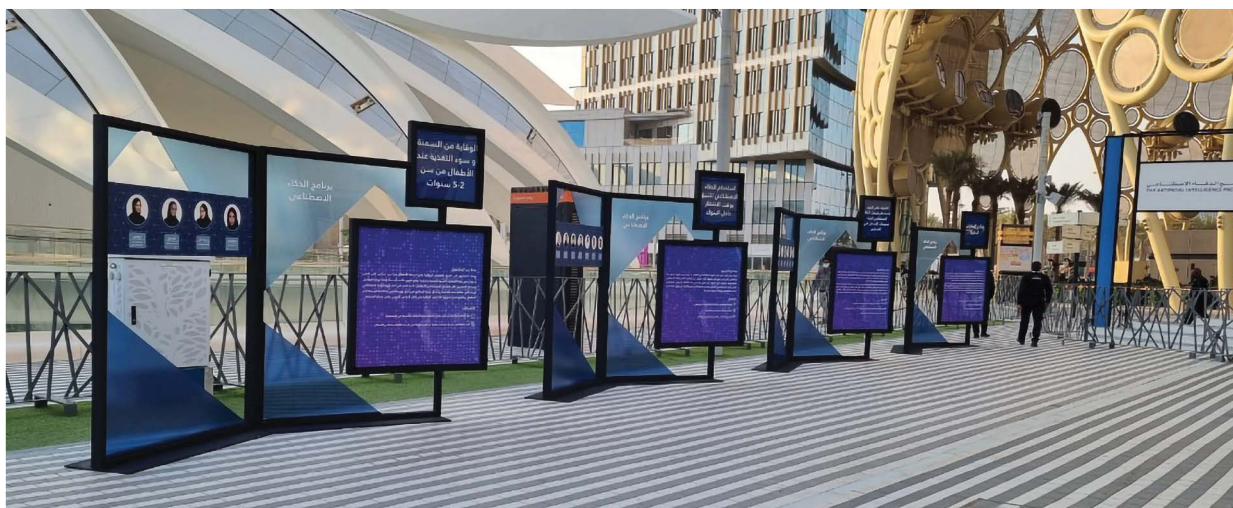
NEON SIGNAGE WITH PLOTTER CUT VINYL





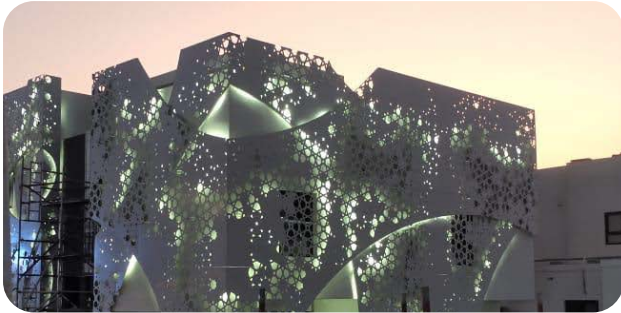






FRONTLIT SIGNAGE



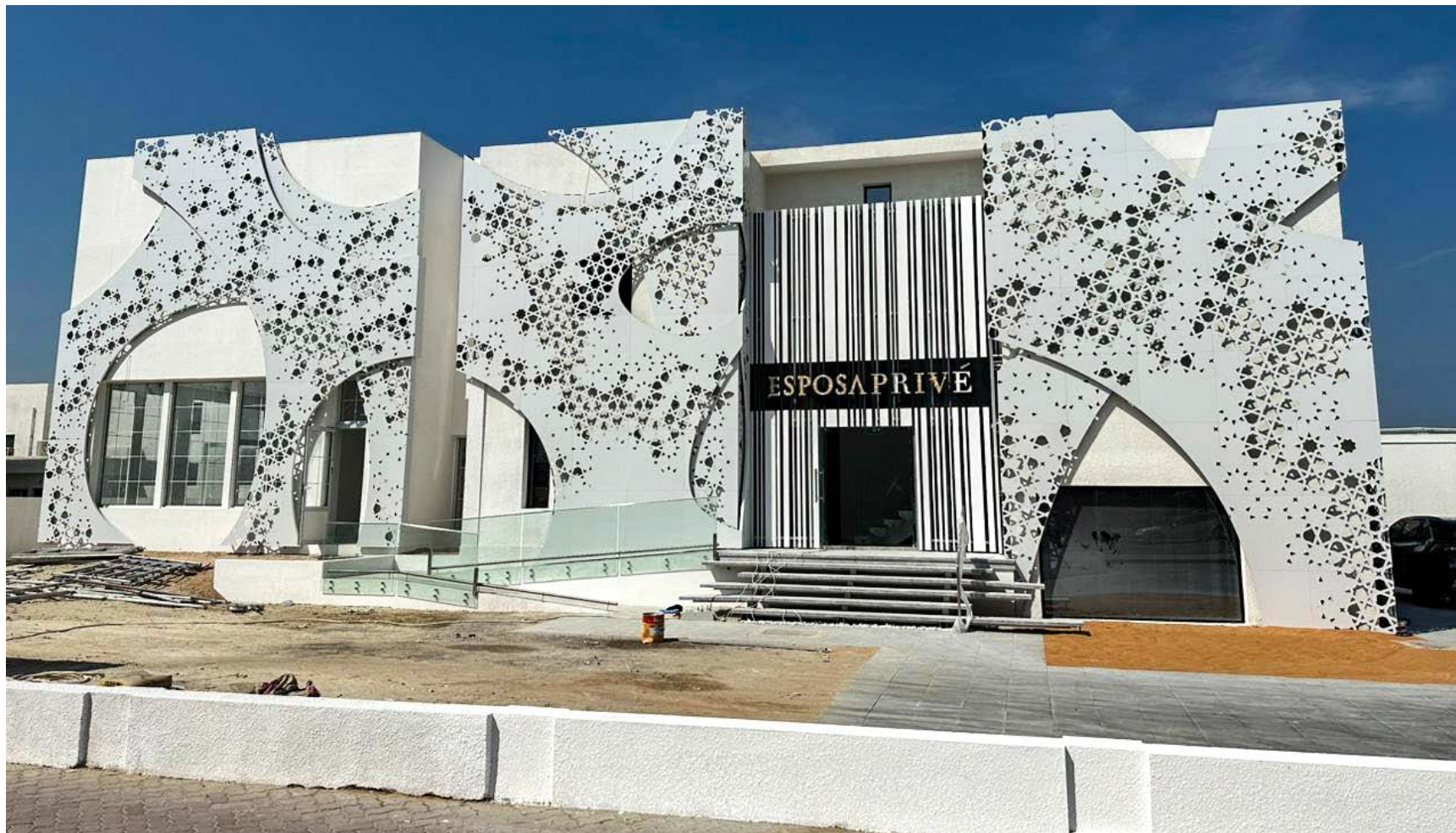


Fabrication is a process of manufacturing or making or creating products from raw materials. These services involve cutting shaping, bonding, bending, assembling and other processes to create a finished product.

At Sabin Signs, we offer custom made solutions for every fabrication requirements to shape ideas into reality. We manufacture either single or bulk quantities. We specialise in all types of acrylic fabrication for varied sizes.

- ☐ Lightboxes
- ☐ Decorative Cladding
- ☐ Fluted Panels and Walls
- ☐ Events & Exhibition Displays
- ☐ Visual Merchandise & Store Displays





BALL DIA: 2mtr





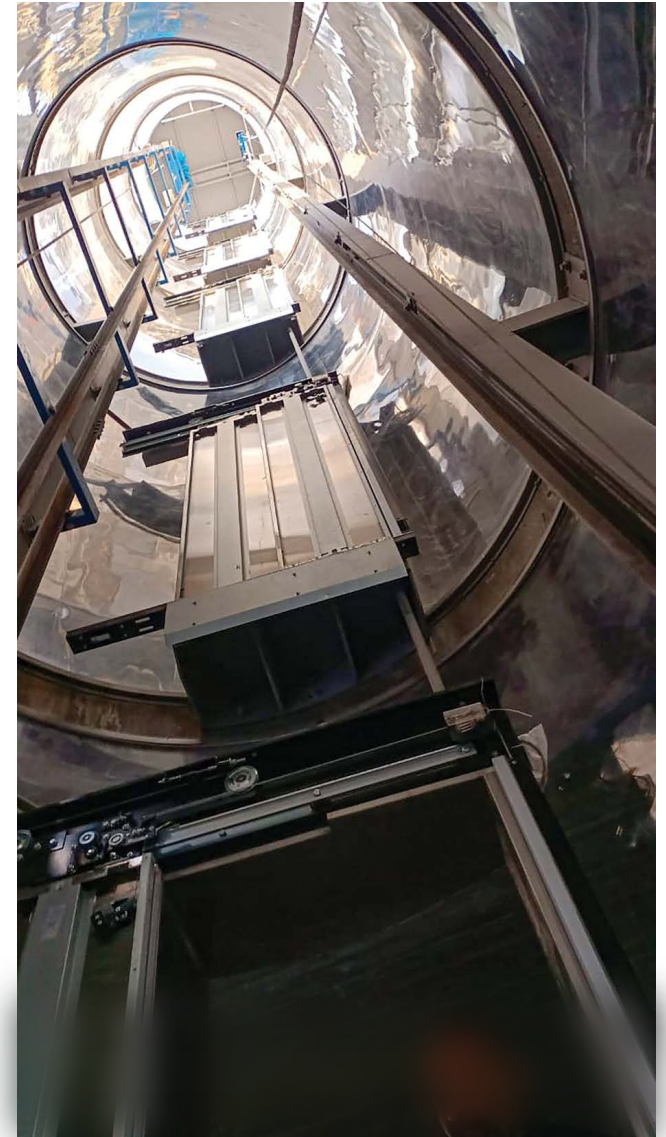


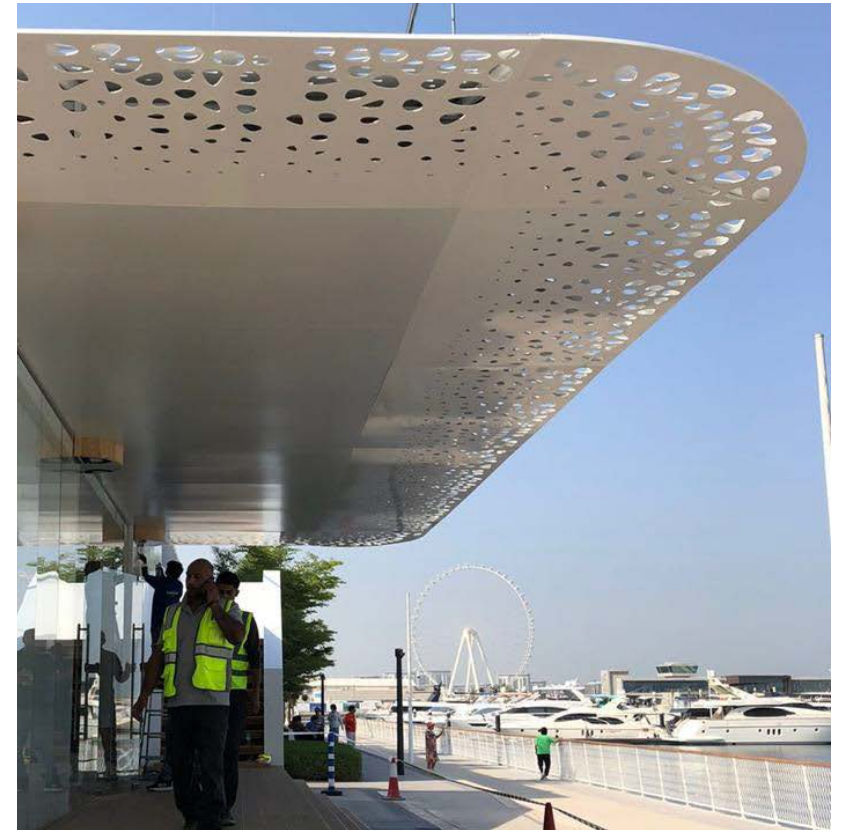


















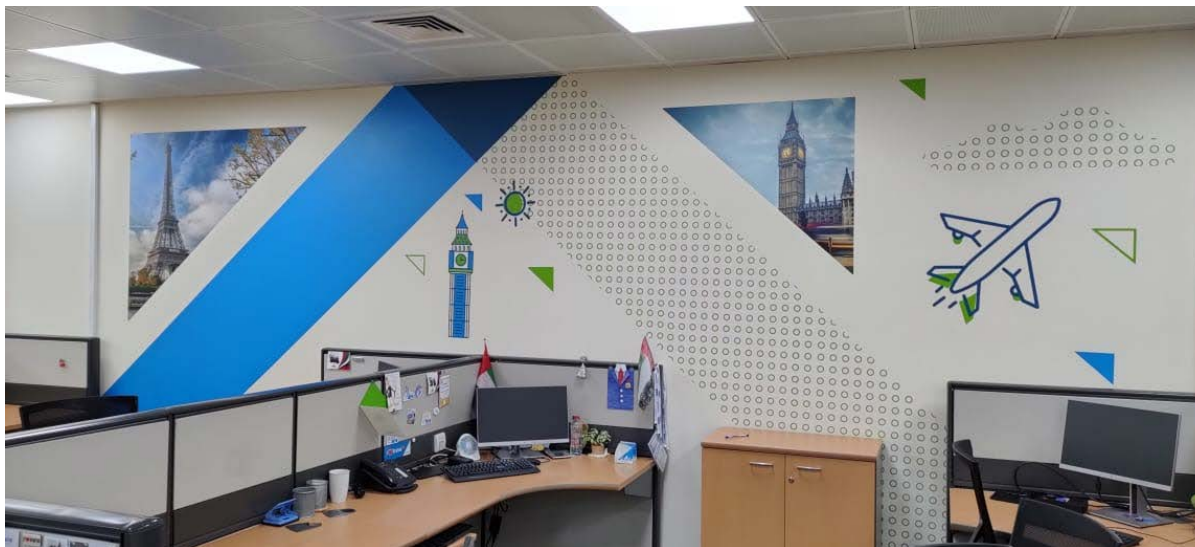
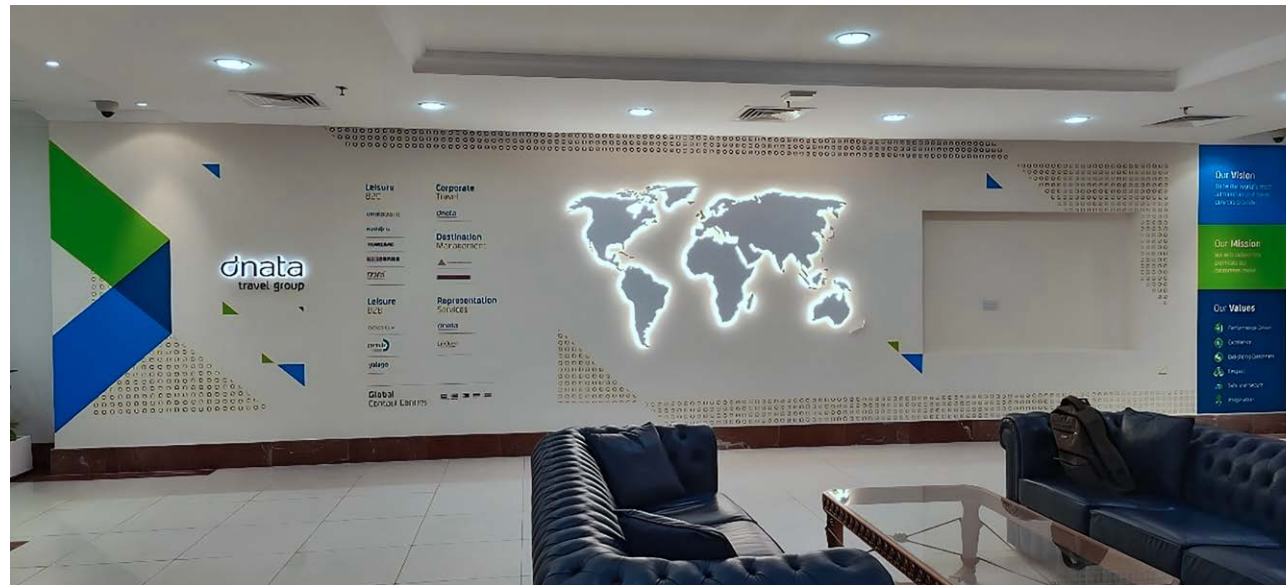
ADIB - KIOSK



EXHIBITION STAND



WALL BRANDING AND SIGNAGES - DNATA





Sabin Signs offers a comprehensive solution to boost your brand visibility and create impactful visuals. We specialize in retail and event branding, wall and window graphics, vehicle branding, decor, and packaging, providing customized solutions and high-quality printing. Our experienced team pays meticulous attention to detail and offers expert guidance throughout the entire process. We provide the best options tailored to your specific needs. Utilizing the latest technology, our prints are thermoformable, non-toxic, eco-friendly, and sustainable.

- ☐ Retail & Events Branding
- ☐ Wall Decor & Art Frames
- ☐ Vehicle Branding
- ☐ Wall & Window Graphics
- ☐ Frosted Stickers



DIGITAL PRINTING

FLATBED | INDOOR | OUTDOOR

Largest Format Printing | 2.5M with unlimited length capability | Wide industry applications



Day & Night Printing | High speed production | Immersive Printing

hp LATEX R2000
Plus

Our latest HP Latex printer will revolutionize the print industry with its impeccable quality. The colours are more vivid than ever and the white is the glossiest white you can ever achieve. We at Sabin Signs offer to print on any media i.e. any rigid and non-rigid making us the one stop shop for all printing solutions

Underflood

Overflood

Spot mode

Sandwich mode

Glossiest White print modes

The HP Latex R Printer Series is capable of printing white and colored inks in four modes, depending on the intended application and media to be used.

<p>No hazard warning labels</p>	<p>Odorless prints</p>	<p>Non-flammable</p>	<p>Non-combustible</p>
<p>Nickel free</p>	<p>No localized ventilation required</p>	<p>No hazardous air pollutants</p>	<p>Environmental Certifications</p>

At Sabin, we want to make a lasting impression and lead the way within the print industry offering a greener solution to our customers.





VEHICLE BRANDING

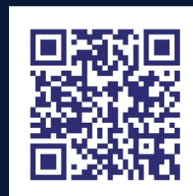


OUR CLIENTS



SABIN[®]

SIGNS



"Thank you for choosing Sabin Signs. Together, we bring your vision to life with precision, creativity, and unwavering commitment to quality.

Let your brand shine with expertly crafted fabrication designed to last."

www.sabinplastic.com

online@sabin.ae

+971 6 503 5353