



# Range of **Plastics**





GADONYA  
HOLDINGS

Gadonya Holdings began its journey in 1979 as a humble ten-person company led by the visionary Satish Gadonya. He spearheaded the company for over three decades and turned it into a highly successful enterprise.

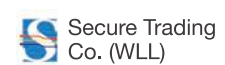
The Gadonya Holdings group is comprised of 10 businesses with a combined workforce of over 900 employees. The company is built on the strong legacy of its network, and strives consistently to exceed the customers' expectations.

# Our group of companies

## ENGINEERING



## INDUSTRIES



## ELECTRICALS



## MEDICAL



## FITNESS



## TOURISM







### Chairman Speak

Gadoya Holdings began its journey in 1979 under the able leadership of the visionary Satish Gadoya.

The company expanded its business to a new wing, Sabin Plastic Industries LLC, which is the brain child of the Chairman Mr. Satish Gadoya. At Sabin, we've successfully introduced plastic products to various industries such as construction, aluminium, glass, kitchen cabinets, packaging, cap and closures, food and beverages, electrical fittings, furniture fittings, sports, printing and many more engineering applications

“Over the past few years, Sabin has taken giant strides on its path to glory and is well ahead on its mission to be a one-stop-shop for all high-end engineering requirements. At Sabin, we understand the expectations one has from high-end precision component manufacturers. We strongly emphasise on timely deliveries, process improvement, economic pricing of products, and training and recruitment of personnel as per the current market.”.

Welcome aboard.

Mr. Satish Gadoya  
Chairman











# Our Promise

## QUALITY

Sabin Plastic Industries LLC believes in the excellent selection of 4Ms (men, machine, method and material) to ensure the desired level of quality. This is achieved by employing highly skilled professionals, state-of-the-art machinery such as conventional tool room machinery, international standard CNC, injection moulding machines of different tonnage/capacity, essential ancillary equipments and machines to support the moulding unit and by using virgin grade plastic raw materials for our production.

Sabin Plastics is an ISO 9001:2008 certified company. ISO 9000 is a family of standards for quality management systems, maintained by the International Organisation for Standardisation. It means that the certified company maintains a great standard in quality that's recognised the world over.

## CUSTOMER'S SATISFACTION

With our main emphasis on customer satisfaction, Sabin Plastic Industries LLC has a proven track record of more than eight years of converting customer needs into superior products with competitive cost and high quality. We deliver ontime and provide value added service.

As of today, Sabin Plastic Industries LLC holds a prestigious customer base comprising of companies from all over the world.



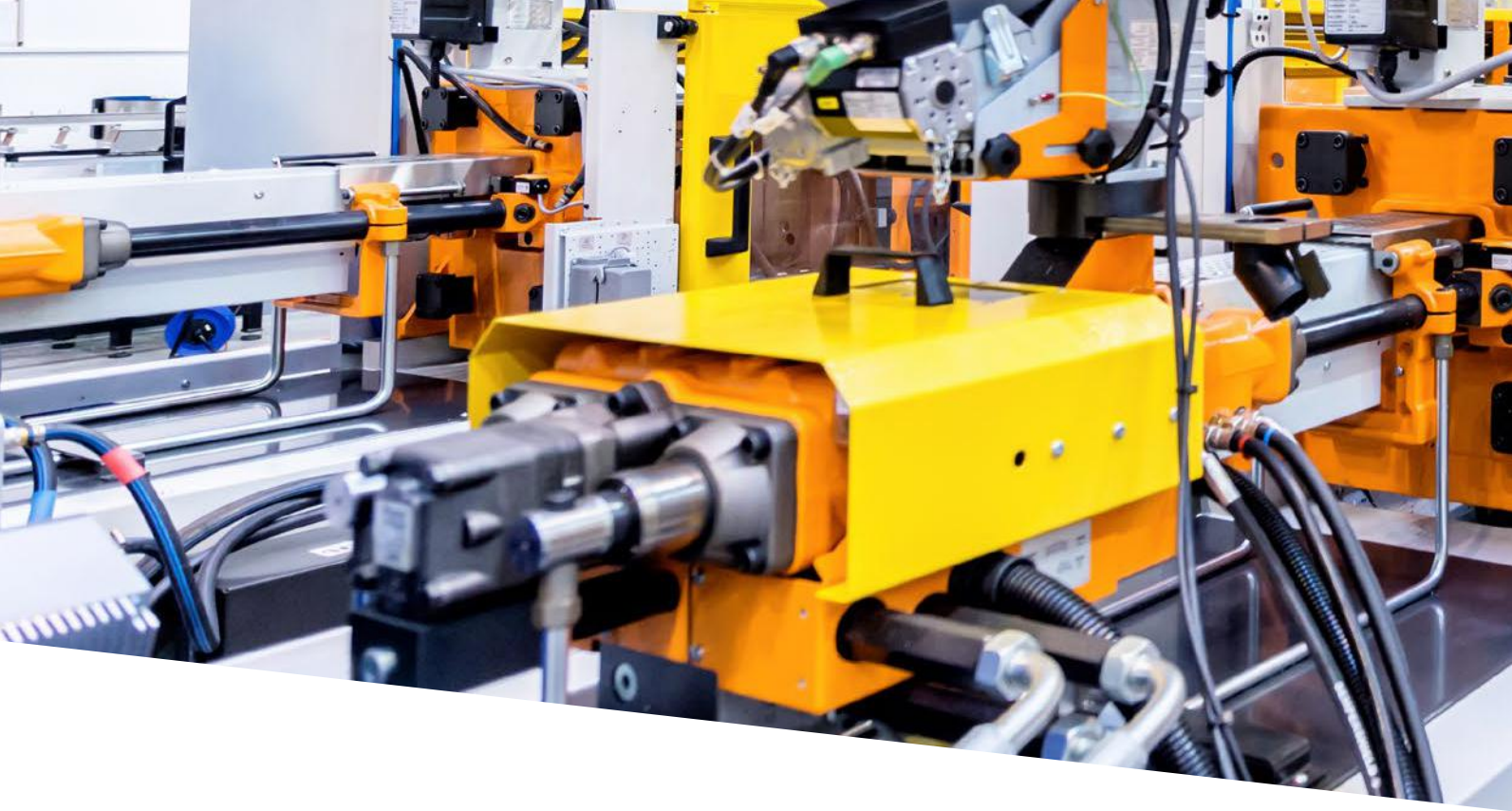
## RELIABILITY

At Sabin Plastic Industries LLC, quality focus is enforced at every aspect. Right from design to delivery, quality and customer's requirements are given paramount importance during every stage of production. All processes are continually monitored with rigorous inspection at various stages.

With the proper selection of raw materials that are 100% pure and virgin and imported from reputed brands of Europe and Middle East, our products are of high quality and widely accepted not only in the UAE, but also throughout the globe.







# Tool Room

## DESIGN

Sabin Plastic Industries L.L.C. has a full-fledged design facility that works to enhance the function and mouldability of any given plastic product according to its service industry or concept.

Our established manufacturing and maintenance facilities are fully equipped with a wide range of capabilities such as engineering production, all types of machining jobs, design, manufacturing and supply of blow moulds and injection moulds, manufacturing and supply of precision cutting dies, jigs and fixtures. They are mainly focussed on injection and blow mould maintenance.

We are equipped with state-of-the-art software i.e. CAD and a well experienced and qualified designer. We are capable of taking up product designing and mould manufacturing.

## TOOL ROOM

- CNC turning and milling centre
- CNC engraving and chemical etching
- VMC 3D printer
- Conventional milling and radial drilling
- Mould radial drilling machine
- Electric discharge machining (EDM)
- Product modelling and development division
- Inspection and quality control

## CONVENTIONAL TOOL

- Room machine
- Milling machine
- Sharper
- Surface grinding machine
- Horizontal turning centre





## Management

- Key account management
- Supply chain management
- Continuous improvement



## Development

- Conceptualisation
- Product modelling
- Design and development
- Program management



## Validation

- Plot testing
- Quality management system
- Documentation



## Manufacturing

- Precision injection moulding
- Cleanroom manufacturing
- Innovative assembly
- Industrialisation and scale-up

# Technology

## INJECTION MOULDING / BLOW MOULDING / EXTRUSION

- Over 20 machines from European and Far East nations
- Microprocessor controlled machines with capacity of 140 to 300 tonnes
- Material Processed: PE, PP, HIPS, PS, PC, ABS, SAN, PVC, Nylon, Specialise Eng. Plastics
- In-house part tooling design and 3D model generation
- In-house mould manufacturing facility with modern tooling facility
- Any quantity form short runs up to 2 million parts per month
- Rapid prototyping capacity with lead time as short as 2 weeks for some basic components
- In-house manufacturing of parts with closed loop CNC machineries
- Permanent zero defect PPM
- Colour matching and excellent batch sampling facility
- Labelling colouring, plating, insert moulding and assembly of various components
- Custom packaging and label application for retail outlets
- Industrial application moulding with PBT POM and gas assisted injection moulding
- Micro moulding facility of electronics

## PRINTING

- Printing high gloss offset and screen printing
- High quality dry offset printers; printing up to six colours

## Our Capabilities



Injection Moulding



Blow Moulding



Printing



## QUALITY ASSURANCE

We conform to quality standards right from process setup to finished goods, allowing traceability at any stage our qualified and trained polymer engineers to ensure optimum quality.

We are also equipped with

- Compression strength test equipment for top load testing
- Colour comparison equipment
- Latest quality and batch sampling
- Analytical lab systems

## FACILITIES

- Central material loading system
- Master batch dosing units for colour steadiness
- Tooling and tool maintenance systems with modern CAD-CAM technology and high-precision CNC machines including EDM and 4-axis milling
- Up to date IT infrastructure including ERP setup for sophisticated planning
- Computerised shop-floor monitoring system with Machine Data Transducer units connected with each machine and equipment for acceleration of the information exchange process between machines and ERP systems



Ultrasonic Welding



Electroplating



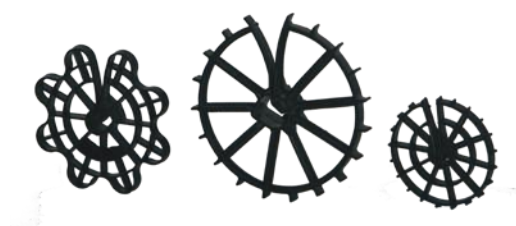
Packaging



## Wheel Spacers (Pile)

Wheel spacers (open) are for reinforcing bars (construction/piling). A full range of wheel spacers are designed for accurate positioning of vertical reinforcing bars.

Size	Colour	Bar Dia	Code
75mm	Black/ Grey	Closed std.	WSR75C- 3
75mm	Black/ Grey	Open std.	WSR750P- 19
75mm	Black/ Grey	Closed new	WSR75CN- 8
75mm	Black/ Grey	Open new	WSR750N- 9
100mm	Black/ Grey	Closed	WSR100C- 7
100mm	Black/ Grey	Open	WSR1000P- 14
75mm	Black/ Grey	Closed heavy duty	WSR75CB- 6
100mm	Black/ Grey	Closed heavy duty	WS100HDC- 257



## Wheel Spacers

Wheel spacers (open) are for reinforcing bars (construction/piling). A full range of wheel spacers are designed for accurate positioning of vertical reinforcing bars.

Size	Colour	Bar Dia	Code
25mm	Black/ Grey	4 ot 8	WSR25- 90
30mm	Black/ Grey	4 to 8	WSR30- 203
30mm-T	Black/ Grey	4 to 12	WSR30T- 22
40mm	Black/ Grey	4 to 12	WSR40- 202
50mm	Black/ Grey	4 to 12	WSR50- 65
50mm-T	Black/ Grey	4 to 20	WSR50T- 43



## Chair Spacers

Chair spacers are specially designed for accurate positioning of horizontal reinforcing bars.

Size	Colour	Bar Dia	Code
25mm	Black /Grey	4 to 12	CHS25B- 200
30mm	Black /Grey	4 to 12	CHS30B- 66
40mm	Black /Grey	4 to 12	CHS40B- 64
50mm	Black /Grey	4 to 12	CHS50B- 207
60mm	Black /Grey	4 to 20	CHS60B- 201
75mm	Black /Grey	4 to 26	CHS75B- 204
75mm MD	Black /Grey	2 to 23	CHS75HD- 223
60mm	Black /Grey	4 to 20	CHS35- 23
(PRF)35mm	Black /Grey	4 to 20	CHS40- 23
(PRF)40mm	Black /Grey	4 to 20	CHSS40- 23

Chair spacer compressive strength report (Attached last page)



## Multi-Strand Anchor Spacer

Strand spacers are provided in the anchor bond zone to separate the strand and provide the minimum required grout cover around each strand for protection against corrosion and bond strength development.



Part name	Colour	ID	OD	L	Code
5 Strand small	Black	35	80	87	FSTSP- 210
5 Strand big	Black	35	110	85	FSTSP- 211
7 Strand small	Black	34	65	369	SVSTSP- 28
7 Strand big	Black	85	90	28	AS7S- 369

## Base Spacers

Our base spacers are meticulously crafted to separate ducts while ensuring that they are kept together firmly. Another feature of base spacers is that they make sure that the pipes don't touch the ground. These are modular matrix locking designed spacers used to accomodate light / hard standard conduits / pipes.



Size	Color	L	H	R	Code
4"	Black/ Grey	150	100	55	PSB4- 345
6"	Black/ Grey	205	155	80	PSB6- 276
115"	Black/ Grey	160	151.5	55	PSB4115- 345
170"	Black/ Grey	215	144	85	PSB6170- 276

## Interlock Spacers

Interlock spacers are carefully designed to ensure that the ducts are kept separately, without contact with each other. These are modular matrix locking design spacers used to accomodate light / hard standard conduits / pipes.



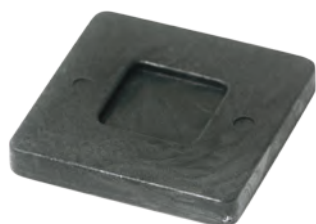
Size	Color	L	H	R	Code
4"	Black/ Grey	100	140	55	PSI4- 344
6"	Black/ Grey	160	207	80	PSI6- 275
115"	Black/ Grey	161.9	177	55	PSI4115- 344
170"	Black/ Grey	215	244	85	PSI6170- 275



## Roof Tile Spacer

Extra strong and sturdy support to assist laying slabs on flat roofs and terraces.

Diameter	Colour	Height	Code
150mm	Black	13mm	RTSR50- 59
150mm	Black	19mm	RTS19MM- 263



## Levelling Shims

Levelling shims are used for alignment and levelling of heavy section steel plate and pre-cast concrete section.

Thickness	Colour	Code
1 x 70 x 70mm	Black	PS771- 49
2 x 70 x 70mm	Black	PS772- 34
3 x 70 x 70mm	Black	PS773- 33
5 x 70 x 70mm	Black	PS775- 30
10 x 70 x 70mm	Black	PS7710- 17
100 x 95 x 10mm	Black	PS109510

## Technical Data (Spacers)

Physical Properties	Unit	Value	ASTM Method
Melt index	g/10 min	4	D-1238
Density	g/ cm <sup>3</sup>	0.960	D-1505
Vicat softening point	°C	128	D-1525
Brittleness temperature	°C	< -75	D-746
Tensile modulus at 1% elongation	Mpa	1240	D-638
Tensile strength at yield	Mpa	33	D-638
Tensile strength at break	Mpa	22	D-638
Tensile elongation at break	%	1200	D-638
Izod impact	J/ m	69	D-256
Hardness (Shore D)	---	69	D-2240
ESCR (100% Igepal), F50	Hrs	6	D-1693B

## Technical Data (Shims)

Properties (Poly Propylene)	Test Method	Unit	value
Melt flow rate (230°C, 2.16 kgs)	ASTM D 1238	g/10min	11
Melting point (DSC)	ASTM D 3418	°C	161
Crystallization point (DSC)	ASTM D 3418	°C	115
Vicat softening point (1 kg)	ISO 306A	°C	152
Tensile strength at yield	ISO 527-2/1B/50	Mpa	33
Elongation at yield	ISO 527-2/1B/50	%	10
Flexural modulus (0.05 0.25 %; 2 mm/min)	ISO 178	Mpa	1350
Izod impact (Notched at 23°C)	ISO 180-4A	K J/m2	3.5
Shore hardness D (15 sec)	ISO 868	----	68



We at Sabin Plastic LLC, have vast and in-depth knowledge about the art of custom moulding. With an ISO 9001 certification and an experienced team, we can breathe life into your designs and churn out finished goods that will match your specifications and exceed your expectations.

We specialise in custom moulding and offer a full range of design and engineering services using computerised production equipment. We can custom mould products in more or less any size, design, or quantity. Our state-of-the-art services include modern development and production technologies, which give us the ability to produce the most durable and consistent products. We use a wide range of raw materials including nylon, acrylics, styrene and polyolefin amongst others.

## Fire Cylinder Accessories

Accessories for fire cylinders. The hose is adopted with high quality vulcanizate to be sunproof and durable.



Product	Packing	Cylinder	Code
CO <sub>2</sub> discharge hose	100 Nos	5Kg	CO2DH
Dry carbon powder hose 1/2"	100 Nos	4.5Kg	PHP40
Dry carbon powder hose 3/4"	100 Nos	4.5Kg	PHP35
CO <sub>2</sub> CUP	100 Nos	2Kg	C2C- 227
Yellow seal	100 Nos	Std.	-----



## Food Packaging

Used on food packaging cans and pizza protection leg for keeping the pizza pieces arranged.

Product	Colour	Size	Code
Lid for chips cup	Yellow	65mm	PLD65- 389
Lid for drynits cup	Yellow	84mm	PLD84- 424
Lid for drynits cup	Yellow	99mm	PSD99- 425
Pizza protection leg	White	Std.	PPL- 41

## Insulation Accessories



## Styrofoam and Rockwool Insulation Pin

We have an array of premium quality insulator pins that are highly durable and offer top performance. They are mainly used in foamboards and insulation panels.

Size	Colour	Unit	Packing	Code
90mm	Black / Blue / White	Nos	500	RWP95N- 332



## High Performance Products

Cutomise products for concrete pumping and concrete casting.

Category	Colour	Code
Saddles	3/4" - 1"	CHS- 60
Grout pipe	As per RAL shades	CVP314
Centraliser	As per RAL shades	CNTRZ402- 402
Reducer	As per RAL shades	PRDR- 407
HDPE pad	As per RAL shades	HP1863285- 288
Joint big / Small	As per RAL shades	JBV- 228- B / JBV- 228- S
Bolt insulator	As per RAL shades	BI105406



## End Cap for Hollow Metal Profile

Plastic cap to cover open ends of square and round metal tubes, mainly used by metal furniture industries and cable management companies.

Size	Colour	Code
40 x 40mm	As per RAL shades	EC40 x 40- 26
41 x 21mm	As per RAL shades	EC41 x 21- 75
Round cap- 40mm	As per RAL shades	ECR40D- 247
Round cap- 48mm	As per RAL shades	ECR48D- 246
50 x 25mm	As per RAL shades	EC5025- 248



## Scaffoldings and Form Works

We have done extensive research to manufacture strong scaffoldings. They are also equipped to offer a solid platform to facilitate different kinds of wooden profile and form works.

Category	Size	Colour	Type	Code
H20	----	Blue	Flat	ECH2001- G2- F
H20	----	Blue	Curve	ECH2001- G2- R
Hole plug	19mm	RAL	----	MC24 - 373
Blind Hole Cap	23mm	RAL	----	BHCD23- 280



## De Watering

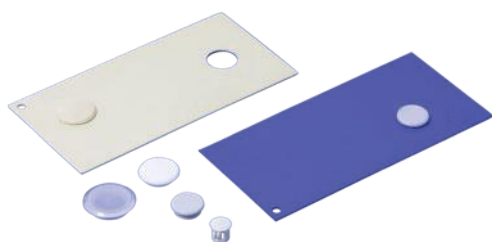
Manufactured with high quality raw materials and advanced technology, these de watering caps are suitable for underground water removal used in well point assembly.

Category	Colour	Code
Pipe end cap	Red	PCR- 32
H20	White	PCW- 55



## Panel Hole Plugs

We have a range of plastic hole plugs that are available in diverse designs and different sizes. Used as caps to cover door and profile holes, they are manufactured from products ranging from nylons to elastometers.



Size	Colour	Code
9.5mm	As per RAL shades	HP95- 421
14mm	As per RAL shades	PCC14- 416
17mm	As per RAL shades	PCC17- 310
19mm	As per RAL shades	PVCEC19- 327
22mm	As per RAL shades	CIA- 34

## Safety Cap For Steel Rods / Bars

Safety caps are mainly used at the end of tubes and rods instead of welding them. These safety caps are made out of UV stabilised strong plastic material.



Size	Colour	Code
6mm	Grey	PCC6- 79
8mm	Grey	PCC8- 79
13mm	Yellow	YC13- 120
10mm	Grey	PCC10- 79
18-16mm	Yellow	MC816
16-32mm	Yellow	MC1632

## Medical Accessories

### First Aid Box

Our first aid boxes are made with sturdy blacket clip direct to case, dust and moisture resistant seal, safe plastic locks and hinges with comfortable carrying handle.



Size	Colour	Code
Small (Custom)	White, orange and green	FABS23195- 289
Medium (Custom)	White, orange and green	FABM26168- 290
Large (Custom)	White, orange and green	FABL26209- 309

### Measuring Cup

Our high quality measuring cups can be used in hospitals and laboratories. Made with supreme raw materials, these measuring cups are resistant to 90% of chemical and acids.



Size	Colour	Packing	Unit	Code
20ml	Transparent	500 per box	Nos	----



## Triple Corner

Made from plastic that is of superior quality, these plastic corners are used to join aluminium profiles for kitchen cabinet assembly. Extremely durable, these triple corners are made with great precision.

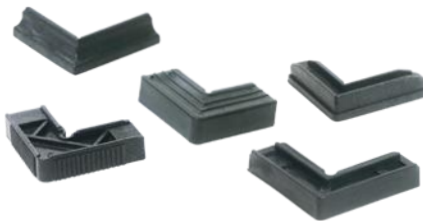
Size	Colour	Code
Standard	White	CTW- 24
Custom	As per RAL	-----
Orders	Shades	-----



## 3-Way Corner

The 3 way plastic corners are manufactured from premier quality plastic, and hence will stay intact without damage for a long time. These plastic corners are used to join aluminium profiles for kitchen cabinet assembly.

Size	Colour	Code
Standard	White	C3WEW- 36
Custom	As per RAL	-----
Orders	Shades	-----



## L Corner

These L-shaped corners are made with perfection and are an integral part of many industries. These plastic corners are used to join aluminium profiles for doors and window frames.

Category	Colour	Code
1049	Black	CR2W1049- 308
C.D.R.I.B	Black	CLCDR2814WT- 217
Naser	Black	CLN14X20WT- 215- WR
2 Way Shelf	Black	CR25- 222
1005	Black	CLS1005- 261



## Decorative Corner

Plastic corners used to join aluminium profiles for doors and windows frames.

Category	Colour	Code
Small	As per RAL shades	CDS- 48
Big	As per RAL shades	CDB- 29
Classic	As per RAL shades	CDC- 225





## Clear PC Window Shutter

Transparent modular panels or clear PC window shutters are made of polycarbonate and they match the metal shutters in their strength and durability. But a unique feature of these shutters is that they allow sunlight to pass through.

Size	Colour	Packing	Code
300 x 110mm	Transparent	200	PWS- 262



## PC Link

PC links are transparent modular panels that are used to make see through rolling shutters. They are strong, durable and offer as much stability as the metal shutters.

Size	Colour	Packing	Code
300 x 85mm	Transparent	500	PCL83305- MI271- 314



## Shutter End Clip

Shutter end clips are plastic clips or clamps used to fix the metal profile of rolling shutters. They make the process of installation easy, without having to drill through the front of the shutter. Another advantage of the clip is that it cannot be seen after the entire installation is over.

Size	Colour	Packing	Code
Custom	Custom	Custom	SEC- 322

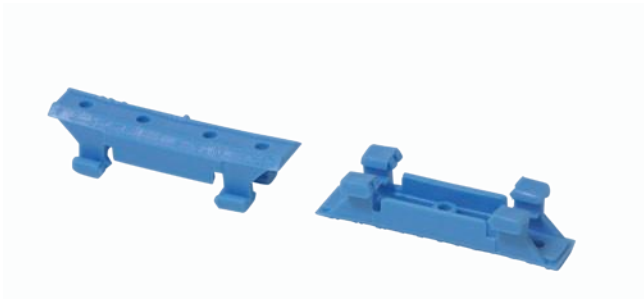
# Pail Containers



## Pail / Paint Containers

- Application for paint, lubricants, grease, chemical, glues, inks, food, fertilisers.
- Ranging from 1 gallon to 5 gallon.
- Made of excellent chemical resistant polymers.
- Suitable for extreme climatic and transportation conditions.
- Printable up to 7 colours.
- Available in different handle options in metal / plastic
- Wide range of colour choice available.
- Available in different sizes.

Size	Colour	Code
1 Ltrs. / 15Ltrs	White / custom	VSPP - 298
1 USG / 5USG / 20Ltrs	White / custom	----



## Neutral Base

Neutral base is used to arrange the wires in electrical control panels. This helps in grouping the wires and keeping it separately, without making contact with each other.

Size	Colour	Code
Standard	Blue	PNB-27



## Energy Meter Window Glass

Energy meter window glass is attached on top of the energy meter to protect it. The window glass we produce is of excellent quality and safeguards the energy meter from scratches and dust.

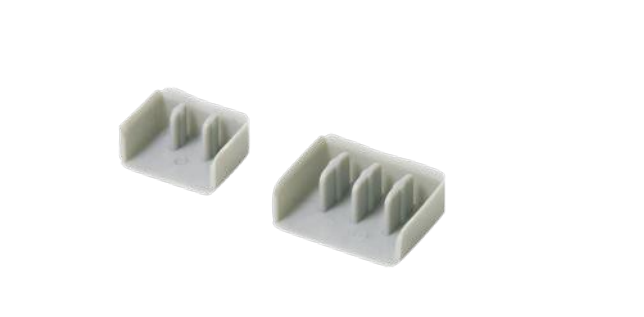
Size	Colour	Fixing	Code
Standard	Transparent Clear	Push	MWP- 71
Standard	Transparent Clear	Screw	MWS- 87



## Louver

The chief purpose of louvers is to act as ventilators in electrical control panels. The louvers we manufacture are of superior quality and blocks the dust from entering the control panel.

Size	Colour	Code
Standard	Light Grey / Beige	LW- 73



## 3 - Pole / 4 - Pole

3-pole and 4-pole are used to cover conductors in switch gear industries. These are essential to protect them against moisture and dust, and also to avoid electric shocks.

Category	Colour	Code
3- Pole	Grey	EC3P- 68
4- Pole	Grey	EC4P- 69



## Blanking Cover

Blanking covers are necessary to shroud exposed sockets from dust and moisture. It is highly important to use them, as they protect against accidental electric shocks.

Size	Colour	Code
Standard	Grey	BCR- 61



## U Packing (Rectangular and Horse Shoe)

These packings (Both rectangular and horse shoe) are used for alignment and levelling of aluminium frame and wall.



Thickness	Colour	Code
100 x 75 x 1mm	Black	PU 1-37
100 x 75 x 2mm	Black	PU 2-5
100 x 75 x 3mm	Black	PU 3-78
100 x 75 x 5mm	Black	PU 5-25
100 x 75 x 10mm	Black	PU 10-12
70 x 52 x 2mm	Black	PUHS 2-95
70 x 52 x 3mm	Black	PUHS 3-76
70 x 52 x 4mm	Black	PUHS 4-97
70 x 52 x 5mm	Black	PUHS 5-96
70 x 52 x 10mm	Black	PUHS 10-105

## Glass Packing

Glass packing is used for alignment and leveling of aluminium frame and glass.



Thickness	Colour	Code
100 x 10 x 1mm	White	PS 111-320
100 x 10 x 3mm	White	PS 113-319
100 x 10 x 5mm	White	PS 115-318
100 x 20 x 1mm	White	PS 121-53
100 x 20 x 3mm	White	PS 123-31
100 x 20 x 4mm	White	PS 124-63
100 x 20 x 5mm	White	PS 125-54
100 x 20 x 2mm	White	PS 122-74



## Shutter PVC male / female

Slider for aluminum fabrication/door handle and aluminum fly screen handle.

Size	Colour	Code
Standard	Black / White	SPMFB-411M / 302



## Door handle

Made from plastic that is of superior quality, these plastic door handles are mainly used on small cabinet sliding doors. Extremely durable, these plastic door handles are made with great precision.

Size	Colour	Packing	Code
Standard	White / Custom	500	DH8426- 296



## Jerry Cans

Oil cans are of different shapes and sizes. Our products are used in various industries and for household purpose to store chemicals, liquids and oils.

Size	Colour	Application	Code
1 Ltrs	White	Oil	-----
4 Ltrs	Silver	Oil / Chemical	-----
5 Ltrs	Custom	Oil / Chemical	-----

# Miscellaneous Items



## Visiting Card Box

Suitable for storing business cards and other small items. It can hold up to 200 business cards.

Size	Colour	Code
Standard	Transparent	VCB- 230



## Sofa Leg

Sofa legs are used in the furniture industry and act as a base to the sofa unit.

Size	Colour	Code
40mm	Black	SSLS- 93
50mm	Black	SSLM- 99
60mm	Black	SSLB- 98



## Aluminium Foil Cutting Blade

These plastic blades help in cutting aluminium foil paper.

Size	Colour	Code
300mm	White	CB300- 299
450mm	White	CB450- 300



## Swimming Pool Gratings

Swimming pool gartings are used as swimming pool grid. These are slipresistant and mainly used to cover the pool drain.

Size	Colour	Packing	Code
195 x 22mm	White	12.5 Mtrs / box	G19522- 249



## Our Projects

EXPO VILLAGE DEVELOPMENT PARCEL 7,10 & 11	-
ZABEEL LINK BRIDGE	-
AL RAHA BEACH DEVELOPMENT - AL ZEINA ROADS & STRUCTURES	2011
DUBAI MARINA	2005
MINA AL ARAB	2009
MUSCAT EXPRESSWAY	2012
BAHRAIN CITY CENTRE	2008
KING ABDUL AZIZ INTERNATIONAL AIRPORT	2016
FLY DUBAI HEADQUARTER AT WARSEN	2017

## Our Clients



**Certificate of Assessment**  
Awarded to

**SABIN PLASTIC IND. LLC**

at  
P.O. BOX NO: 22185, INDUSTRIAL AREA 4, SHARJAH, UAE

Quality Registrar Systems certify that the management system of the above organization has been audited and found to be in compliance with the QRS requirements for registration of the management system standard detailed below:

**ISO 9001:2008**  
Quality Management Systems  
Scope of work  
DESIGN, MANUFACTURING AND SUPPLY OF PLASTIC COMPONENTS

Certificate No: ASU-1044  
Originally Registered: 05 OCT 2015  
Latest Issue: 05 OCT 2015  
Valid up-to: 04 OCT 2018

**QRS**  
Quality Registrar Systems  
WORLDWIDE CERTIFICATION

MANAGING OFFICE ADDRESS:  
Quality Registrar Systems  
P.O. Box :26826  
United Arab Emirates

Tel: +971-2-6714302  
Fax: +971-2-6741449  
www.qrsys.com

This is an accredited certificate authorized for issue by Accreditation Service for Certifying Bodies (Europe) Limited who have assessed QRS as a Certifying Body for compliance with ISO 17021:2011 'Conformity Assessment - Requirements for bodies providing audit and certification of management systems.'

ISO 9001 : 2008 CERTIFIED

Appendix 15

**RUWAI'S HOUSING COMPLEX EXPANSION - PHASE IV  
CONSTRUCTION OF BACHELOR ACCOMMODATIONS  
PROJECT NO. 7010  
AGREEMENT NO. 147010C7**

**MATERIAL APPROVAL REQUEST (MAR)**

Serial No: **C 0 1 7 3** Rev. No: **0 0** Date: **2 0 1 5 / 0 9 / 2 0** SrC Ref: **0 0 0 0**

Material Description: **13 mm HDPE Roof Tile Spacer**

Trade Name: **Roof Tile Spacer** Manufacturer: **Mrs. Sabin Plastic** Supplier: **Mrs. Hammer** ADNOC Reg. No:

Specification requirement detail: **07100** Location / Area of use: **Roof - Below Concrete Tiles** Discipline: **Architectural**

Technical details: **Please refer to submittal**

Attachments:

1 Specification comparison Sheet	<input checked="" type="checkbox"/>	Yes	<input type="checkbox"/>	NA	4 Other supporting documents (list):
2 Samples	<input checked="" type="checkbox"/>	Yes	<input type="checkbox"/>	NA	Test Reports
3 Original Brochure	<input checked="" type="checkbox"/>	Yes	<input type="checkbox"/>	NA	

NA: Not applicable

Notes/Comments:

For CONTR: ☐ Accepted ☐ Accepted subject to ☐ Incorporate comments, resubmit before proceeding ☐ Not accepted

Name: **Rayan El Eid** Date: **20 September 2015** Signature: **[Signature]**

For ADNOC: ☐ Accepted ☒ Accepted subject to ☐ Incorporate comments, resubmit before proceeding ☐ Not accepted

Comments:

- Contractor proposed HDPE spacer used at roof concrete tile is accepted.
- Submit warranty for approval.
- Submit the test results.
- Attach the test certificates for approval.

Name: **Mr. Mohammed Asayan Al Mansouri** Date: **28 SEP 2015** Signature: **[Signature]**

PCD-QSC-FMT-061 Rev 0 15 May 2014

APPROVAL CERTIFICATE

**Material Lab**  
Qulf Testing Soil

**REPORT ON DETERMINATION OF SHORE 'A' HARDNESS OF 5 M U PACKING**

Page: 1 of 1

Contractor: <b>Sabin Plastic Ind.</b>	Report No: <b>42020 SN 1/1</b>
Address: <b>Abu Dhabi, UAE</b>	Lab Project No: <b>P-241AD</b>
Client: <b>Self</b>	Sample No: <b>14-42020/1-10</b>
Consultant: <b>Self</b>	Date of Sampling: <b>NP</b>
Project: <b>NP</b>	Date Sample Received: <b>24/09/2014</b>
Sample Description: <b>5 mm Packing Shim HDPE</b>	Date test started: <b>28/09/2014</b>
Sample Name: <b>5 mm Packing Shim HDPE</b>	Date test completed: <b>28/09/2014</b>
Source: <b>Sharjah, U.A.E</b>	Report Date: <b>28/09/2014</b>
Samples by: <b>Mr. Mukesh</b>	Date of Calibration: <b>28/09/2014</b>
Client's Sample Ref.: <b>NP</b>	S. No. of Indenter: <b>52500</b>
Size of Sample: <b>1 Piece</b>	Tested by: <b>SH</b>
Relative Humidity: <b>50%</b>	
Testing Room Temp.: <b>24°C</b>	

Shore 'A' Hardness	ASTM D 2240 - 05	A/93, 1/1
--------------------	------------------	-----------

Test Method: **ASTM D 2240 - 05**  
Conditioning of Specimen: **ASTM D 2240 - 05 Section 8.0**  
Method variation: **Nil**  
Remarks: **Type A Durometer was used to carry out the test.**

Authorized Signatory  
**Shajal Mahmood D. Lab Manager**

**Material Lab Gulf Testing Soil**

Results relate only to the item tested.  
This report shall not be reproduced except in full, without written approval of the laboratory.

Material Lab Gulf Testing Soil - Abu Dhabi: P.O. Box - 51831, Tel: +971 2 5503042, Fax: +971 2 5503041  
Material Lab - Dubai: P.O. Box: 114717, Tel: +971 4 3405678, Fax: +971 4 3405677  
Email: info@sabinplastic.com Website: www.sabinplastic.com

SHORE "A" HARDNESS REPORT

**LOAD TEST REPORT**

Client: <b>Sabin Plastic Industries LLC</b>	BCTS Report #	M1700 L
P.O. Box: 22185, Sharjah, U.A.E	BCTS Job #	SPI-1004-1
Attention: <b>Mr. Sabin</b>	Equipment:	UTM, BCTS-M-001
Reference: <b>CRF Date: 29.09.2012</b>	Report issued on:	29.09.2012

Sample Description (As provided by client)

Sample Description:	Plastic Levelling Shims	Material:	Poly Propylene
Test Code:	ASTM D638		

Test Result:

Sample ID	Material Description	Result
M1700-1	Load Test on 3mm thick	310.15 N/mm²
M1700-2	Load Test on 3mm thick	312.11 N/mm²
M1700-3	Load Test on 5mm thick	318.20 N/mm²
M1700-4	Load Test on 5mm thick	318.29 N/mm²
M1700-5	Load Test on 10mm thick	330.25 N/mm²
M1700-6	Load Test on 10mm thick	331.22 N/mm²

Lab Engineer: Metallurgy Dept  
Form # BCTS/FR/37 R0

Warehouse No.: 31, P.O. Box : 91785, Al Quoz - Dubai - U.A.E.  
Tel.: +971 4 3395515 / Fax: +971 4 3395516, E-mail : bcts@abim.ae  
Branch Office : Abu Dhabi, P.O. Box : 33097, Mussafah Industrial Area

LOAD TEST REPORT

**REPORT ON COMPRESSIVE STRENGTH OF CHAIR SPACER**

REPORT NO.	RP-DB-15-04572	REPORT DATE	15/09/2017
REQUEST NO.	RQ-DB-15-04237	SAMPLE NO.	SA-DB-15-04787
JOB ORDER NO.	JO-00721-14		
PROJECT NAME	NOT GIVEN	PROJECT NO.	NOT GIVEN
CLIENT NAME	SABIN PLASTIC INDUSTRIES	SENDER'S REF.	CS 30mm
CONSULTANT	NOT GIVEN		
CONTRACTOR	NOT GIVEN		
SAMPLE DESCRIPTION	Chair Spacer	SAMPLE SIZE	23
SOURCE	SABIN PLASTIC INDUSTRIES	LOT NO.	NOT GIVEN
LOCATION	NOT GIVEN	LOT SIZE	NOT GIVEN
SAMPLED BY	CLIENT	SAMPLING DATE / TIME	15/09/2016
SAMPLE BROUGHT IN BY	CLIENT	RECEIVING DATE / TIME	15/09/2016
		SAMPLING REPORT NO.	NOT GIVEN

**TEST RESULT**

Specimen No.	Thickness (mm)	Applied Load (N)	Load at Failure (N)
1	7.5	23.3	23.3
2	7.5	25.0	25.0
3	7.5	23.3	23.3
Average Load at Failure (N)			23.9

TEST METHOD : ASTM D 1521  
TESTING DATE : 15/09/2016  
TEST METHOD VARIATION : NONE  
REMARKS : NONE  
TESTED BY : HNA

For MATCON TESTING LABORATORY  
Roy Yohannan Mathai  
Laboratory Manager



Results related only to the items tested.  
This report shall not be reproduced except in full, without the written approval of the laboratory.  
Any unauthorized amendment/corrections will invalidate this test report.

**CHAIR SPACER (7.5mm)  
COMPRESSIVE STRENGTH REPORT**

**REPORT ON WATER BURST OF PLASTIC PIPE**

REPORT NO.	RP-DB-15-00945	REPORT DATE	23/07/2016
REQUEST NO.	RQ-DB-15-02819	SAMPLE NO.	SA-DB-15-04728
JOB ORDER NO.	JO-00721-14		
PROJECT NAME	NOT GIVEN	PROJECT NO.	NOT GIVEN
CLIENT NAME	SABIN PLASTIC INDUSTRIES	SENDER'S REF.	NOT GIVEN
CONSULTANT	NOT GIVEN		
CONTRACTOR	NOT GIVEN		
SAMPLE DESCRIPTION	PLASTIC PIPE / GROUT PIPE	SAMPLE SIZE	Ø1
SOURCE	SABIN PLASTIC INDUSTRIES	LOT NO.	NOT GIVEN
LOCATION	NOT GIVEN	LOT SIZE	NOT GIVEN
SAMPLED BY	CLIENT	SAMPLING DATE / TIME	NOT GIVEN
SAMPLE BROUGHT IN BY	CLIENT	RECEIVING DATE / TIME	15/07/2016 @ 16:00 HRS.
		SAMPLING REPORT NO.	NOT GIVEN

**TEST RESULT**

SAMPLE NO.	Outer Diameter (mm)	Inner Diameter (mm)	Pressure applied (kpa)	Observation
1	27.28	21.40	1000	No leakage or any other mode of failure observed

TEST METHOD : ASTM D 1585  
TESTING DATE : 23/07/2016  
TEST METHOD VARIATION : NONE  
REMARKS : NONE  
TESTED BY : HNA



For MATCON TESTING LABORATORY  
Roy Yohannan Mathai  
Laboratory Manager

Page 1 of 1

Results related only to the items tested.  
This report shall not be reproduced except in full, without the written approval of the laboratory.  
Any unauthorized amendment/corrections will invalidate this test report.

**WATER BURST OF PLASTIC PIPE REPORT**

**REPORT ON COMPRESSIVE STRENGTH OF SHIM PAD**

REPORT NO.	RP-DB-17-05595-01	REPORT DATE	03/09/2017
REQUEST NO.	RQ-DB-17-07541	SAMPLE NO.	SA-DB-17-21233
JOB ORDER NO.	JO-00721-14		
PROJECT NAME	NOT GIVEN	PROJECT NO.	NOT GIVEN
CLIENT NAME	SABIN PLASTIC INDUSTRIES	SENDER'S REF.	NOT GIVEN
CONSULTANT	NOT GIVEN		
CONTRACTOR	NOT GIVEN		
SAMPLE DESCRIPTION	SHIM PAD / 76 X 76	SAMPLE SIZE	Ø1
SOURCE	SABIN PLASTIC INDUSTRIES	LOT NO.	NOT GIVEN
LOCATION	SHARJAH - UAE	LOT SIZE	NOT GIVEN
SAMPLED BY	CLIENT	SAMPLING DATE / TIME	30/09/2017
SAMPLE BROUGHT IN BY	CLIENT	RECEIVING DATE / TIME	30/09/2017
		SAMPLING REPORT NO.	NOT GIVEN

**TEST RESULT**

Specimen No.	Width (mm)	Thickness (mm)	Force (kN)	Compressive Strength (N/mm²)
1	66.9	10.2	484.4	709.8

TEST METHOD : ASTM D 538  
TESTING DATE : 03/09/2017  
TEST METHOD VARIATION : NONE  
REMARKS : This report supercedes document RP-DB-17-05595 dated 03/09/2017  
TESTED BY : HNA



For MATCON TESTING LABORATORY  
Rajeev Kumar  
Laboratory Manager

Page 1 of 1

Results related only to the items tested.  
This report shall not be reproduced except in full, without the written approval of the laboratory.  
Any unauthorized amendment/corrections will invalidate this test report.

**SHIM PAD  
COMPRESSIVE STRENGTH REPORT**

**SUBMITTAL TRANSMITTAL (DOCUMENT)**

Project : FLYDUBAI NEW HEADQUARTERS BUILDING ON PLOT NO. 8110841 AT WARSAW 3RD AREA, DUBAI, UAE Date: 03<sup>rd</sup> Oct. 2017  
Engineer Project Number: D15-33  
Submittal No.: F242-FLYDUBAI-DS-009 Revision: 03

TRANSMITTAL To : M/S DEWAN ARCHITECTS Date: 03<sup>rd</sup> October 2017  
From : UNIVERSAL PILING FOUNDATION LLC Name/Sign: RAVI KARANDHAR

Discipline: ☐ Architectural ☒ Structural ☐ A/C ☐ Electrical ☐ Plumbing ☐ Landscaping ☒ Material Data sheet

Title / Description:

REVISED MATERIAL DATA SHEET FOR PLASTIC SPACER (M/S SABIN PLASTIC IND.L.L.C.)  
ALONG WITH COMPLIANCE SHEET & SAMPLE OF SPACER

**Enclosures/Attachments:**

☒ Material Data sheet along with Compliance sheet

☒ Submitted for review and approval ☐ Substitution involved - Substitution request attached  
☐ Resubmitted for review and approval ☐ Resubmission-Comment reply sheet attached  
☐ Submitted for information only ☐ If substitution involved submission includes point-by-point comparative data or preliminary details  
☒ Complies with Contract requirements ☐ Items included in submission will be ordered immediately  
☐ Will be available to meet construction schedule ☐ Engineer review time included in construction schedule upon receipt of approval

TRANSMITTAL To : M/S PMK CONSULT Attn.: MR. MIKE CAIRNEY  
From : M/S DEWAN ARCHITECTS + ENGINEERS Date Rec'd by Consultant:

☐ Approved ☐ Revise / Resubmit  
☐ Approved as noted ☐ Rejected / Resubmit

Other remarks on above submission

Name: Sign: Date Transm'd by Engineers: 03 OCT 2017

Page 1 of 2

Form F12.5A

**FLYDUBAI HQ - PROJECT**







# Location



# Contact US

SABIN PLASTIC INDUSTRIES LLC.  
P.O.Box 22185,  
Sharjah, UAE  
Tel: +971 6 503 5353

P.O. Box 2349,  
Dubai, UAE  
Tel: +971 4 3476444

P.O. Box 91585,  
Abu Dhabi, UAE  
Tel: +971 2 5507929

P.O.Box 22185,  
Doha, Qatar  
Tel: +974 4 417 7370

Web : [www.sabinplastic.com](http://www.sabinplastic.com)  
Email : [info@sabinplastic.com](mailto:info@sabinplastic.com)





[www.sabinplastic.com](http://www.sabinplastic.com)

Sabin Plastic Industries L.L.C. is a subsidiary of Gadoya Holdings ([www.gadoyaholdings.com](http://www.gadoyaholdings.com))